

# MG5 Electric

The world's first  
electric station wagon



Recharge yourself



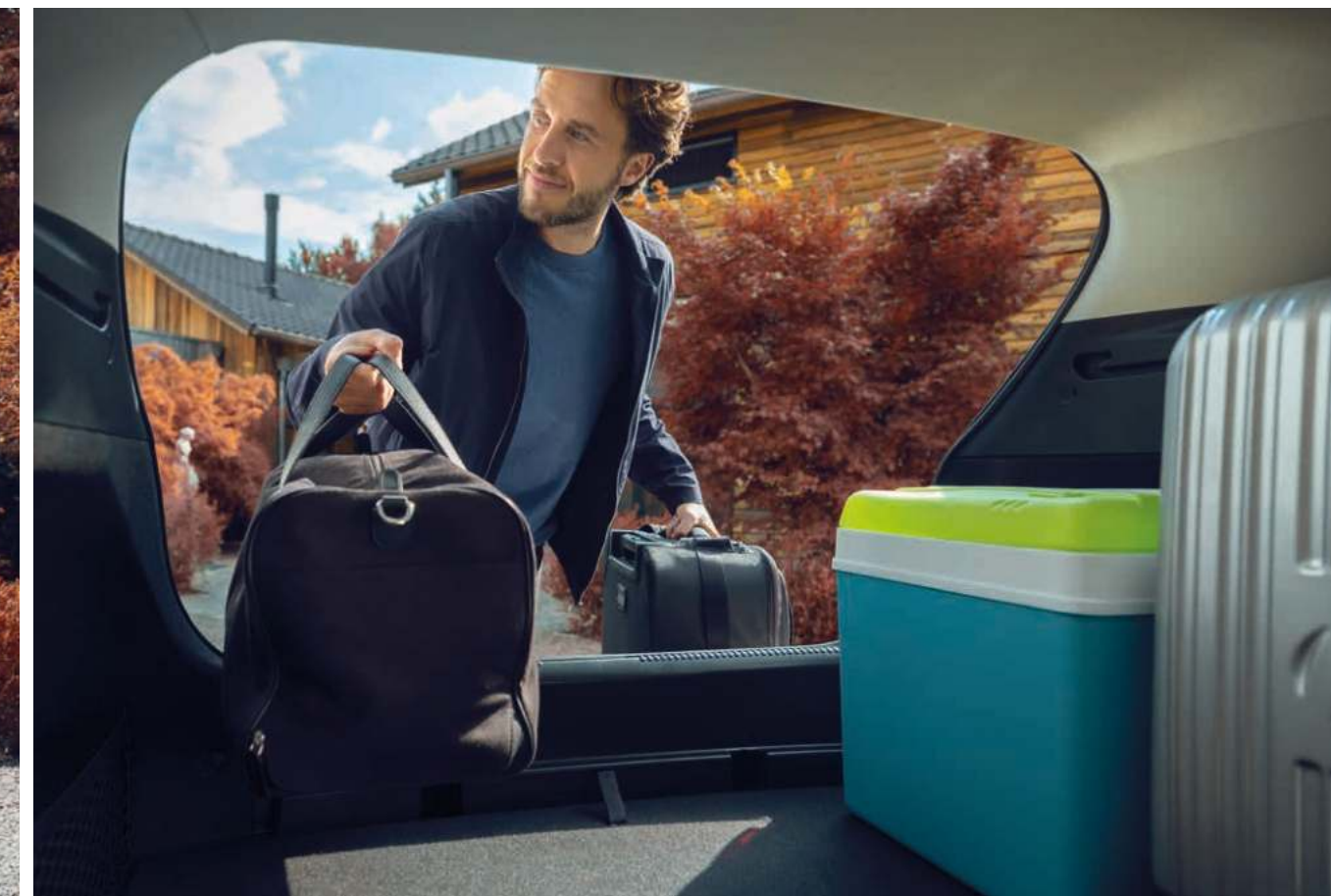


# Making room for the future

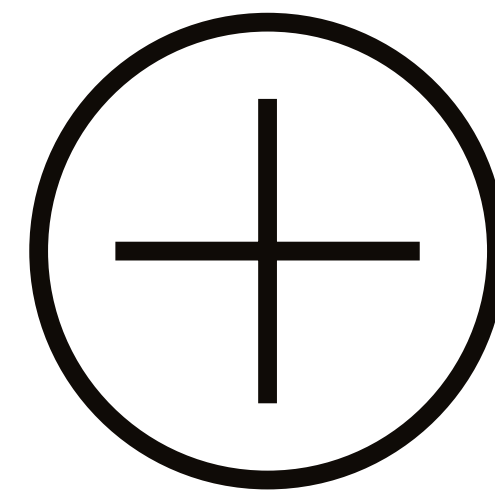
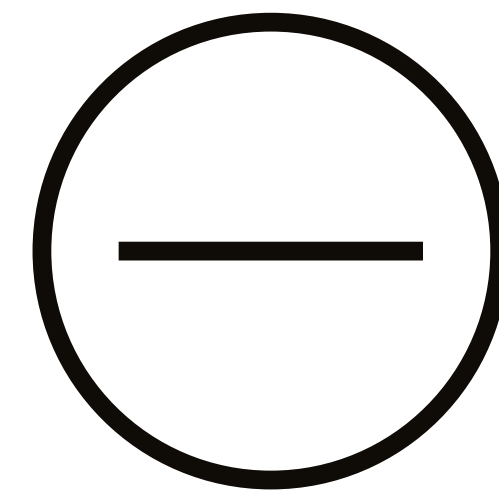
The future of mobility is electric. As we move into that exciting automotive landscape, there are some things we may want to take with us on the road.

Vacationers need room for their suitcases. Families take the kids to soccer practice. And the neighbours' kids too. Businesspeople need room to carry product samples. Clubs want to stock lots of drinks for the cantina – and a few boxes of snacks. Empty nesters help their kids move out. And then the kids need room when their partners move in.

Everyone is on their way to somewhere, always. And wherever life takes you, the new MG5 Electric can drive you there. Totally electric, totally practical and totally connected, with room to spare.









# The world's first electric station wagon

---

The new MG5 Electric is part of MG's second generation of EVs, and it takes electric driving to the next level. As the first fully electric estate on the European market, this spacious and feature-filled car gives electric drivers more room than ever.

There are a host of features to make your journey easier, including our innovative MG Pilot driver-assistance features and the intelligent MG iSMART Lite suite of connected technologies.

So whether you're going on a family outing or taking a business trip, this forward-thinking station wagon will let you pack everyone you love and everything you need.







# The look of the future

The MG5 Electric's stunning, streamlined design builds on MG's new 'Evolution Design' philosophy. This progressive, human-centric approach to automotive mobility combines a practical focus with a high-tech aesthetic – creating a modern, minimalistic look and feel that maximises comfort and minimises distractions.



The bold, chromed strip across the car's face accentuates its spacious dimensions. It extends along the full body length, for a unified look that accentuates the estate's long lines and powerful styling.







# Big on space, big on power

With a length of more than 4.5 metres, the MG5 Electric was made for family, work, and everything else. Up to five passengers can travel in comfort with exemplary road handling, while the boot has ample room for everyone's luggage, work materials and other gear.

With 479 litres of storage space in the back, the MG5 Electric lets you bring all your everyday needs. Dropping the 60:40 folding seat gives you a total of 1,367 litres for everything from large boxes and bikes to sports gear. You can also free up space inside by attaching a bicycle carrier or roof box.



The car's 130 kW power lets you accelerate from 0-50 km/h in just 3.4 seconds, while the 280 Nm torque gives you a convenient 500-kg towing capacity, with up to 75 kg of roof load. So you can always comfortably get where you need to be, with everything you need to bring with you.



# Getting you there – and back again

The MG5 Electric will take you wherever you need to go. The powerful battery pack delivers a comfortable range of 400 km on a single charge (WLTP-certified).

Also, the car has been designed with smart features to make the most of your range. For example, three distinct levels of regenerative braking increase efficiency and optimise battery charge as you drive.



Powering up for your next trip is hassle-free. Convenient AC fast charging delivers 3-phase 11-kW power to your MG5 Electric, while the DC CCS rapid charger with max 87 kW charging capacity will bring your battery to 80% in just 40 minutes. Enough time to stretch your legs and get a relaxing coffee.

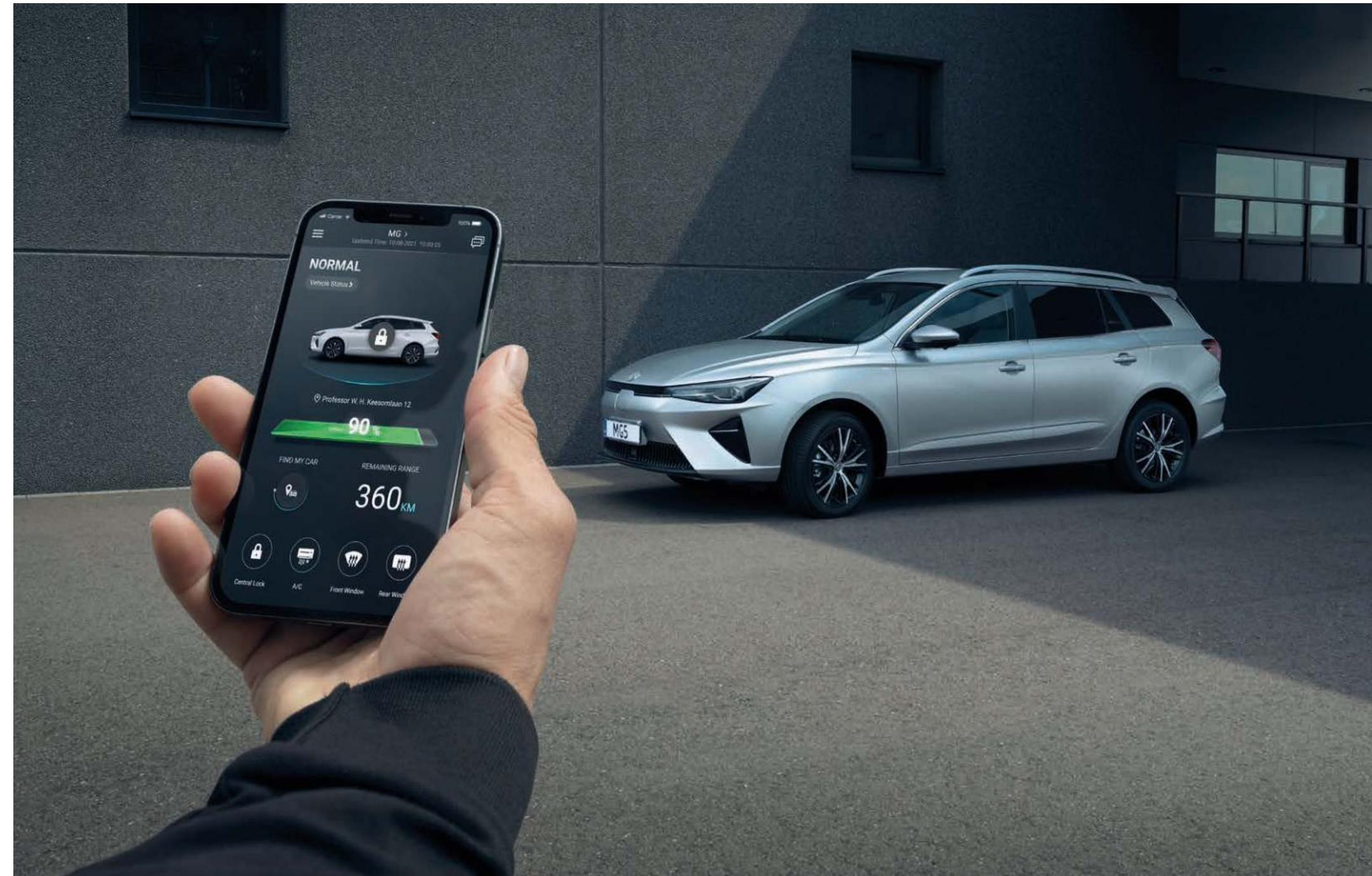


# Stay connected & in control MG iSMART Lite is here to help

The convenient MG iSMART Lite suite of connected technologies helps you make the most of every trip.

The MG5 Electric's intelligent functions include:

- Find your vehicle using the smartphone app
- Remote control for certain key functions
- Vehicle health scan
- 10.25" on-board touchscreen for managing car features
- Advanced vehicle control
- Connectivity functions

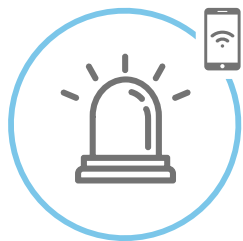




# MG iSMART Lite



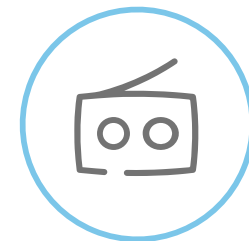
Apple CarPlay™ & Android Auto™



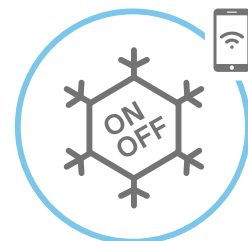
Alarm



Set scheduled charging



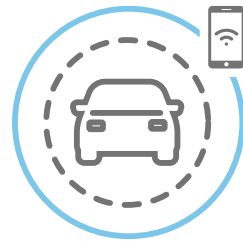
DAB+



App remote control



Find your vehicle



Vehicle status diagnosis



Lock and unlock the car









# Enjoy every drive

The MG5 Electric lets you travel in comfort and in style. In the front, you can settle in with the six-way adjustable driver's seat and four-way adjustable passenger seat.

In the back, passengers enjoy plenty of headroom and legroom, even behind a taller-than-average driver.







# Smart features for a more satisfying drive

From the all-electric powertrain upwards, the MG5 Electric is loaded with features that make your journey easier, smarter and safer. Keyless entry and push-button start make setting off simple. And with a choice of Eco, Comfort and Sport driving modes, the MG5 Electric can adapt to your journey and driving style.



On the road, the 10.25" colour touchscreen puts DAB radio, Bluetooth connectivity, navigation, air conditioning, Apple CarPlay™ and Android Auto™ and many other features at your fingertips – so you can keep track of the traffic in between your favourite playlists or podcasts.

Multiple USB ports let passengers easily charge every device on board. And the handy V2L (vehicle-to-load) system lets you use the car's battery to power external devices like e-bikes or an electric barbecue. And whether you're driving the family or for business, you can look forward to low running costs with the MG5 Electric.





# Safe driving with MG Pilot

Our intelligent MG Pilot technology comes as standard on the new MG5 Electric. These innovative driver-assistance functions give you the added confidence of state-of-the-art warning and alert features. The nine safety features include:



- ✔ Automatic Emergency Braking (AEB)
- ✔ Adaptive Cruise Control (ACC)
- ✔ Traffic Jam Assistance (TJA)
- ✔ Lane Keep Assistance (LKA)
- ✔ Intelligent High Beam Control (IHC)
- ✔ Speed Assistance System (SAS)
- ✔ Front Collision Warning (FCW)
- ✔ Traffic Sign Recognition (TCW)
- ✔ Lane Departure Warning (LDW)



# Choose your favourite look

The MG5 Electric comes in four eye-catching colours



● Diamond Red (metallic)



● Pebble Black (metallic)



● Medal Silver (metallic)



○ Dover White (non-metallic)



Comfort - black fabric seats



Luxury - black leatherette seats (standard)



Luxury - grey leatherette seats (standard)



Comfort - 16" alloy rim



Luxury - 17" dual-colour alloy rim



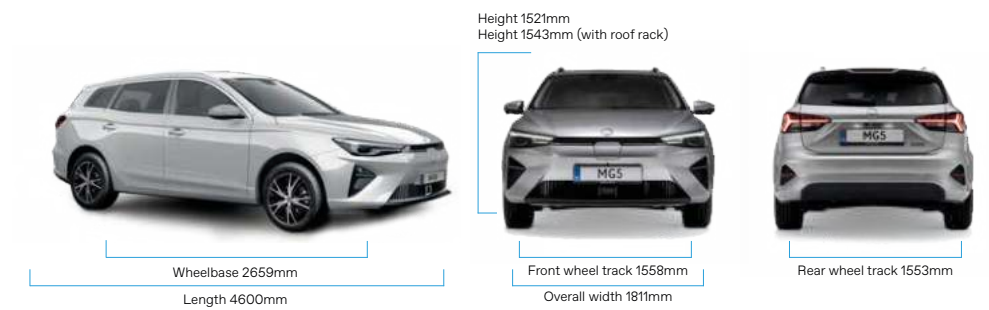


## Technical parameters

	Standard range	Long range
<b>Dimension and weight</b>		
Length (mm)	4600	
Width (mm)	1818	
Height (mm)	1521/1543 (with roof rack)	
Wheelbase (mm)	2659	
Ground clearance (mm)	115	
Rear trunk cargo space (unfold/fold, L)	479/1367	
Unladen mass (kg)	1562	
Technically permissible maximum laden mass (kg)	2017	
Technically permissible laden mass on each axle (kg)	1100/1050	
Towing capacity (unbraked, kg)	500	
Towing capacity (braked, kg)	500	

	PSM motor	
<b>Electric motor and battery</b>		
Type	PSM motor	
Motor peak power (kW)	130	115
Motor peak torque (Nm)	280	
Battery capacity	50.3	61.1

	Standard range	Long range
<b>Electric motor and battery</b>		
Battery type	LFP (Lithium Iron Phosphate)	NMC (Lithium Nickel Manganese Cobalt)
On-board charger max power (kW)	11kW	
DC charging time (0-80%)	40min	
<b>Performance</b>		
Max speed (km/h)	185	
Range (WLTP)	320 (16" wheel)	400 (16" wheel)
	310 (17" wheel)	380 (17" wheel)
Energy consumption (Wh/km)	179 (16" wheel)	175 (16" wheel)
	184 (17" wheel)	179 (17" wheel)
Acceleration (0-100 km/h)	7.7s	





# Features

	Comfort	Luxury
<b>Safety</b>		
Alarm	●	●
Immobiliser	●	●
E-call system	●	●
ESP	●	●
EBA	●	●
HDC	●	●
Auto hold	●	●
EPB	●	●
Rear door child lock	●	●
Rear seat ISOFIX with upper tether & lower anchor	●	●
Rain sensor	-	●
Direct TPMS	●	●
<b>Airbag</b>		
Front airbags for driver and passenger	●	●
Side airbags for driver and passenger	●	●
Side curtain airbags for driver and passenger	●	●
Passenger-side airbag switch	●	●

	Comfort	Luxury
<b>Assistance systems</b>		
Adaptive Cruise Control (ACC)	●	●
Intelligent High Beam Control (IHC)	●	●
Speed Assistance System (SAS)	●	●
Front Collision Warning (FCW)	●	●
Automatic Emergency Braking (AEB)	●	●
Lane Departure Warning (LDW)	●	●
Traffic Jam Assistance (TJA)	●	●
Traffic Sign Recognition (TSR)	●	●
Lane Keep Assistance (LKA)	●	●
<b>Lights</b>		
LED day running light	●	●
LED headlight	●	●
LED taillight	●	●
Rear LED fog lamps	●	-
Twilight sensor	●	●
High-mounted braking light	●	●

# Features (continued)

	Comfort	Luxury
<b>Park assistance</b>		
Rear parking sensor	●	●
Rear camera with dynamic guidance lines	●	-
360° camera with dynamic guidance lines	-	●
<b>Safety belt</b>		
Front 3-point + pretensioner & load limiter	●	●
Rear 2 sides 3-point + pretensioner & load limiter	●	●
Front and rear safety belt reminder	●	●
<b>Exterior</b>		
Roof rail	●	●
Spoiler	●	●
Boneless front wipers	●	●
Rear wiper	●	●
Tinted windows	●	●
Privacy rear windows	●	●
Rear windshield heating	●	●

	Comfort	Luxury
<b>Outside mirrors</b>		
Heating	●	●
Turning indicator	●	●
Electrical adjustment	●	●
Auto fold	-	●
Body colour	●	●
<b>Door handles</b>		
Body colour	●	●
Partially chromed	●	●
<b>Interior and comfort</b>		
Lazy lock	-	●
12V socket	●	●
Trunk cover	●	●
Trunk lamp	●	●
Knob shifter with back light	●	●
Chromed door handles	●	●
Sun visor with mirror and lamp	●	●
Headlights home function	●	●
Auto anti-dazzling interior mirror	-	●
Rear reading lights	●	●



## Features (continued)

	Comfort	Luxury
<b>Climate</b>		
Manual control air conditioning	●	-
Climate control air conditioning	-	●
Air conditioning with PM2.5 filter	●	●
<b>Window lift</b>		
Electrical lift	●	●
Driver-side auto up & down	●	-
All window auto up & down	-	●
Driver-side anti-pinch	●	-
Front and rear anti-pinch	-	●
<b>Steering wheel</b>		
Leather with stitch	●	●
4-way adjustable	●	●
Multifunction	●	●
<b>Infotainment</b>		
Digital cluster	7"	7"
DAB+	●	●

	Comfort	Luxury
<b>Infotainment (continued)</b>		
Speakers	6	6
2 microphones	●	●
4 USB ports	●	●
Bluetooth	●	●
<b>MG iSMART Lite Connectivity System</b>		
Remote control	●	●
Navigation with range prediction	●	●
Scheduled charging	●	●
Apple CarPlay™/Android Auto™	●	●
<b>Central lock</b>		
Remote lock	●	●
Keyless entry	●	●
One-button engine start	●	●
<b>EV driving modes</b>		
Driving mode selection	●	●
Kinetic energy regeneration system (KERS)	●	●

## Features (continued)

	Comfort	Luxury
<b>Seats</b>		
Driver seat 6-way adjustable	●	●
Driver seat electrically adjustable	-	●
Passenger seat 4-way adjustable	●	●
Driver seat manual lumbar support	-	●
Map pocket behind front seats	●	●
Fabric seats	●	-
Leatherette seats	-	●
Front-seat heating	●	●
Rear seats with central armrest with cup holder	●	●
40:60 foldable rear seats	●	●
<b>Rim and tyre</b>		
205/60 R16	●	-
215/50 R17	-	●
16" alloy rim	●	-
17" dual-colour alloy rim	-	●
Tyre repair set	●	●

	Comfort	Luxury
<b>Charging</b>		
Charging cable (safety plug with Type-2 plug)	○	○
Charging cable (Type-2 with Type-2 plug, 32A)	○	○
<b>Exterior colours</b>		
Dover White (non-metallic)	●	●
Pebble Black (metallic)	○	○
Diamond Red (metallic)	○	○
Medal Silver (metallic)	○	○
<b>Interior colours</b>		
Black	●	●
Gray	-	○